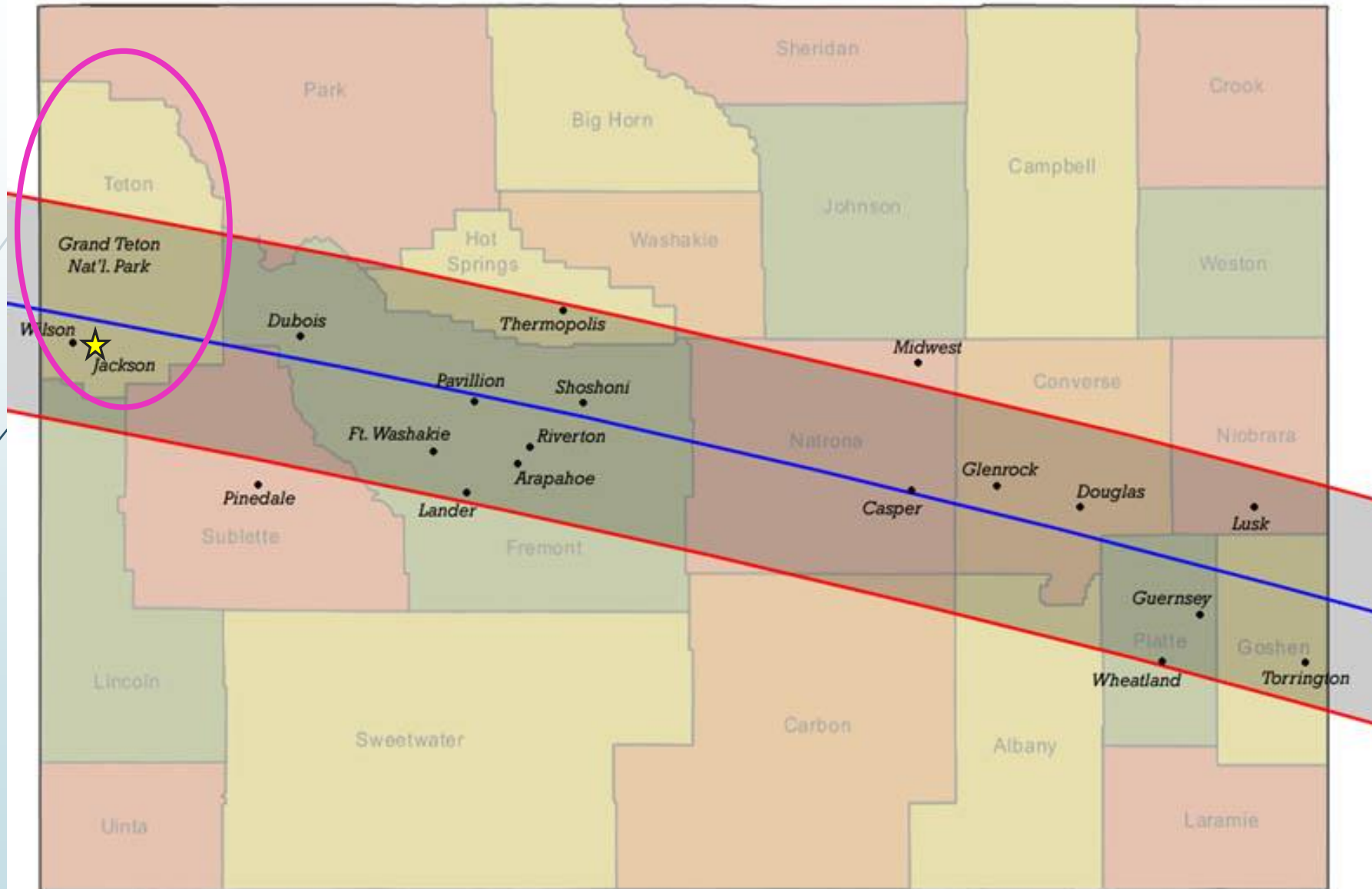


# Teton County, WY 2017 TSE Planning Efforts

November 3<sup>rd</sup>, 2016



# Teton County, WY

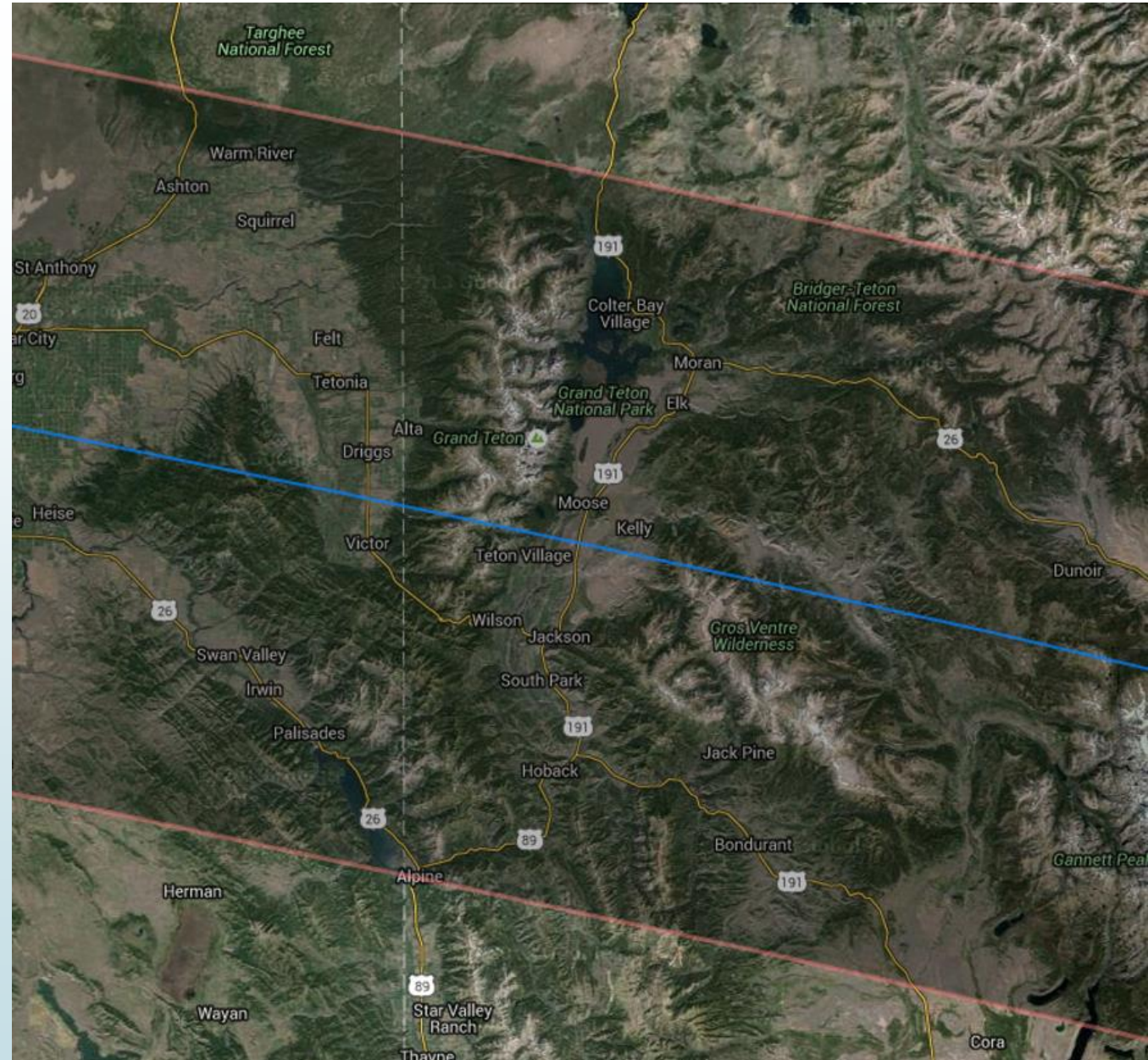


Maps courtesy of geology.com / Xerxes Jubier / Google Maps / Eclipse2017.org



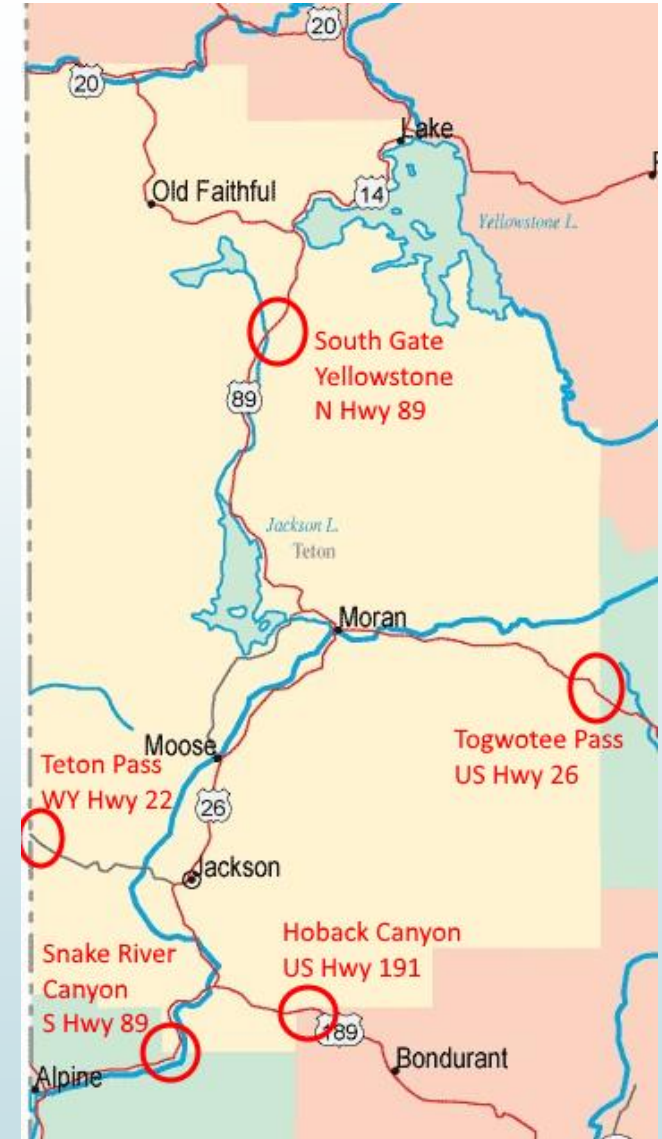
## Teton County, WY Profile

- Regional nickname is “Jackson Hole”
- One incorporated city in the county: Town of Jackson
- 97% of the County is Federal land
- Population is approximately 22,000, but can easily triple any given day in the summer with pass-through traffic
- Only County in Wyoming without any commercial natural resource extraction
- Economy almost entirely dependent on sales tax revenue from tourism
  - Mid-August is peak tourism season
- Teton County frequently tops lists for “richest” county in US
  - Also recently identified as the highest in the US for income inequality by Economic Policy Institute



## Transportation

- Essentially 5 ways in and out of the County by road
  - Two are through landslide and avalanche prone canyons
  - Two are over mountain passes
  - One heads north into Yellowstone National Park
- Teton County has START Bus public transportation system
  - Ridership is over 900,000 annually
- Private shuttles run daily to Idaho Falls and Salt Lake City
- Teton County has the busiest commercial airport in Wyoming
  - 627,397 arrivals/departures in 2015 at Jackson Hole Airport
- No rail access



## Emergency Management

- Teton County Emergency Management is the Emergency Management Agency for both Teton County and the Town of Jackson
  - 3 person office consists of EM Coordinator, EM Program Assistant, and Communications Coordinator
  - TCEM maintains the County Emergency Operations Center (EOC) and emergency plans
- Typical incidents include:
  - Wildfires
  - Floods
  - Search & Rescue
  - Landslides/Avalanches



# 2017 TSE Preparations

- **July 2015** – Preliminary TSE planning meetings with Jackson PD, JH Fire/EMS, and Teton EMA
- **March 2016** - Rendezvous Fest JH Mountain Resort 60<sup>th</sup> Anniversary Concert
  - With 16,000 attendees, was the largest single special event in Teton County history
  - Ran under ICS with Unified Command of Teton County Sheriff's Office, JH Mountain Resort, and Concert Producer
  - Began planning in January 2016
- **June 2016** – Conducted required Threat and Hazard Identification Risk Assessment (THIRA) workshop using TSE as planning scenario
- **August 2016** – Town & County Administrators approve Teton EMA's TSE planning framework
- **September 2016** – Present TSE planning framework and Emergency Support Function (ESF) responsibilities to Local Emergency Planning Committee (LEPC) and JH Airport Board
- **October 2016** – Monthly TSE ESF Coordinator Meeting



# Teton County, WY 2017 TSE Planning Team

## Core Planning Team

- Teton Emergency Management
- JH Fire/EMS
- Teton County SO
- Jackson PD
- Grand Teton NP
- Bridger-Teton NF
- National Elk Refuge

## ESF Coordinators

- TC Public Works
- TOJ Public Works
- TCEM Communications Coordinator
- American Red Cross
- TC Public & Environmental Health
- TCSO SAR
- RERT #8
- TC Parks & Rec
- JH Chamber of Commerce
- TC/TOJ PIOs

## ESF Primary & Support Agencies

- WYDOT
- START
- JH Airport
- TC/TOJ/TCSO IT
- TC/TOJ Planning & Building
- Integrated Solid Waste & Recycling
- Teton Village FD
- Teton Clerk
- TOJ Finance Director
- Teton School District
- St. John's Medical Center
- Teton VOAD
- Housing Authority
- WY Office of Homeland Security
- Teton Historic Preservation Board
- Lower Valley Energy
- Fall River Electric
- WY Highway Patrol
- WY Division of Criminal Investigation
- Teton PIO Group
- TCSO Dispatch
- Teton Interagency Dispatch Center
- WY Game & Fish



# What we know

- ▶ Hotel rooms that book this far out are all full in Teton County and have been for over a year
- ▶ The middle of August is still peak tourism season for our area; local infrastructure is already at capacity
- ▶ Although General Aviation does not take reservations, they have had people calling and they believe they will have significant parking issues
- ▶ All local vendors for port-a-johns have been sold out for this time period
- ▶ Local golf courses are renting greens to various groups for eclipse viewing
- ▶ Local astronomy clubs are planning to host several public events
- ▶ JH Mountain Resort opened up sales for their tram to the top of Rendezvous Mountain and it sold out in a matter of 3 hours without any advertisement





# What we don't know



- ▶ How many people are coming, when, and for how long
- ▶ What the weather and wildfire season will be like in our area and surrounding areas



# Moving Forward

- ▶ Need further coordination with neighboring jurisdictions and states
- ▶ Will conduct monthly planning meetings, increasing in frequency about 3 months out from eclipse
  - ▶ ESF Coordinators are requested to have meetings and develop plans in their areas
- ▶ Exercises are planned, but not necessarily focused on the TSE
- ▶ Continued work on estimating number of events and visitors to help with emergency services budgeting and planning
- ▶ Developing Joint Information System (JIS) with major stakeholders to create unified TSE messaging



# Questions?



Rich Ochs, CEM, MEP  
Coordinator

Teton County Emergency Management  
[rochs@tetonwyo.org](mailto:rochs@tetonwyo.org)

