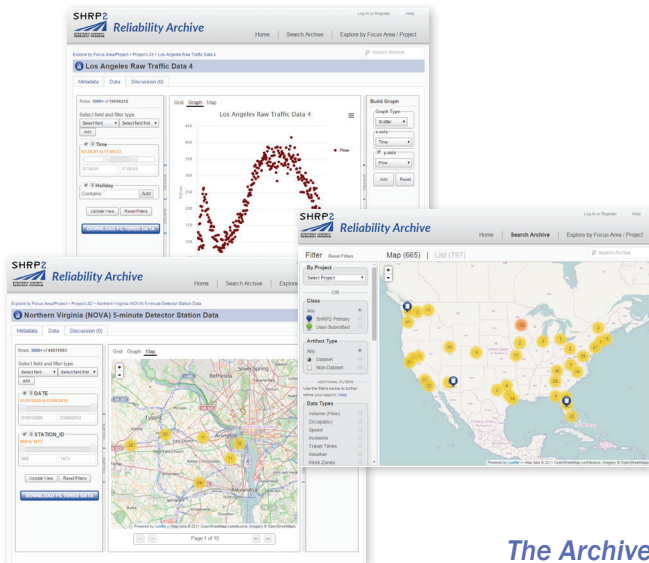








The second **Strategic Highway Research Program (SHRP2) Reliability Archive** is a repository that stores the structured and unstructured data from more than 45 SHRP2 Reliability and Reliability-related projects. The Archive contains more than 2 TB of data. Included in the Archive are various resources from these projects, including raw datasets, analysis results, tools and models, and documentation. These resources are expected to be of significant benefit to the research community, traffic engineers, planners, data managers, and others interested in data related to transportation reliability.



The Archive is interactive, enabling its users to search, download, and visualize:

-  Freeway travel times collected through GPS, Bluetooth, toll tags, and others
-  Traffic volumes, speeds, and occupancies through roadway sensors
-  Factors affecting reliability, including weather, work zones, and incidents
-  Level of Service (LOS)

The Archive can be accessed free of charge at shrp2archive.org