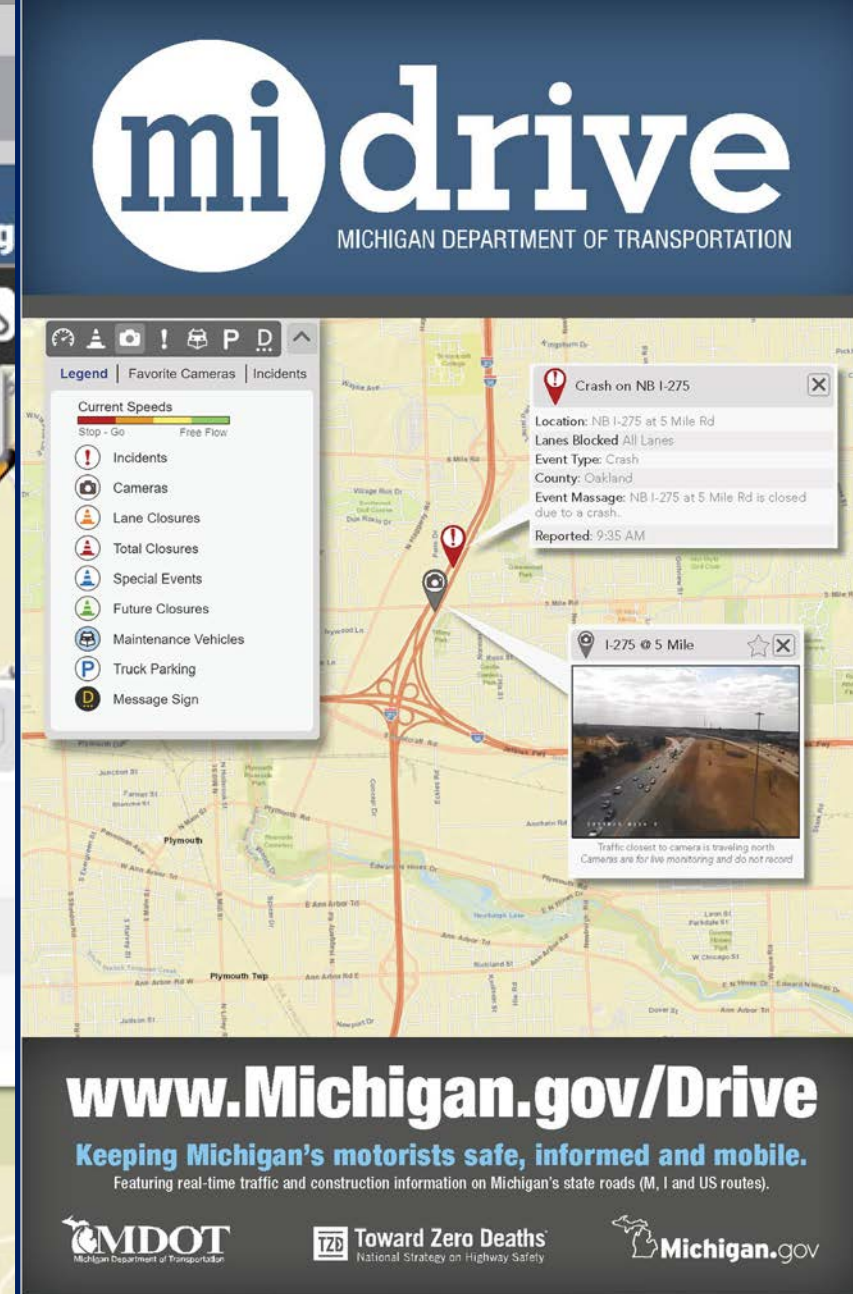
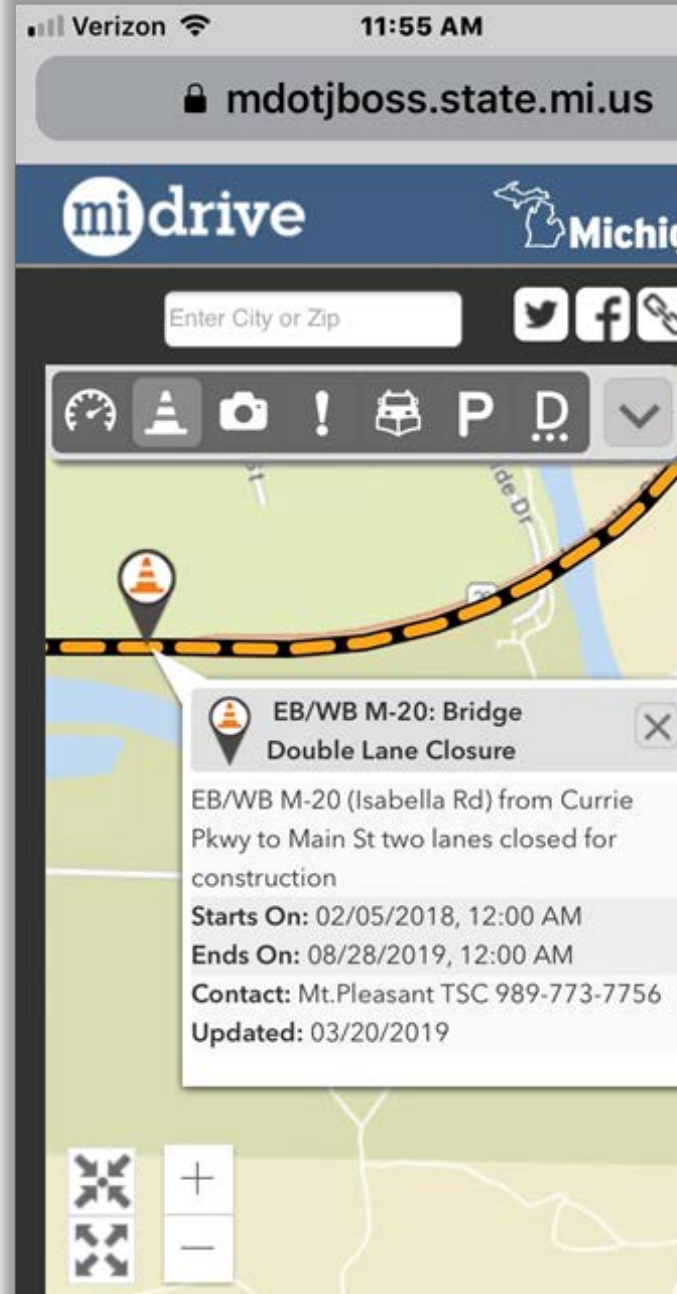


Mi Drive

- Redeveloped July 2018
- Focus on identified consumer: Commuter
- Slimmed down simplistic approach
 - Meet MAP-21 Reqs
- Standardized the construction/workzone data set across state
- Developed in partnership with the communications office



TFR

- Moved from in house develop to private developer
- Integrated into back office solution for CAV
- Engineering information vs public relations
- Provide info to Mi Drive and CAV
- Data soon to be incorporated into WZDx Feed

https://terraformmanager.net/TfrEntry

Suggested Sites Stream Manager RICOH Scanner

LISTING + NEW FILTER

* - Required Not shared with Mi Drive RED - Needs Attention

MAP CLOSURE...

JOB ID

* COUNTY Select...

* DIRECTION Select...

* ROAD

AKA ROAD NAME

CATEGORY * CATEGORY LANE(S) AFFECTED OPEN LANES TYPE
Select... <Leave Blank> Number of Open Lanes <Leave Blank>

* LOCATION POINT RANGE

* START POSITION TYPE * CROSS-STREET
Cross-Street

* END POSITION TYPE * CROSS-STREET
Cross-Street

* JOB TYPE Select...

* RESTRICTION START

* RESTRICTION END

DAILY CLOSURE TIMES	MON	TUE	WED	THU
	All Day	All Day	All Day	All Day
	N/A	N/A	N/A	N/A

Set daily closure times for all days that do not have a set time to: ALL DAY NONE

DETOUR Note: All detours must be approved.

ADDITIONAL INFO URL URL (starting with http:// or https://)

* CONTACT INFO Start typing to search...

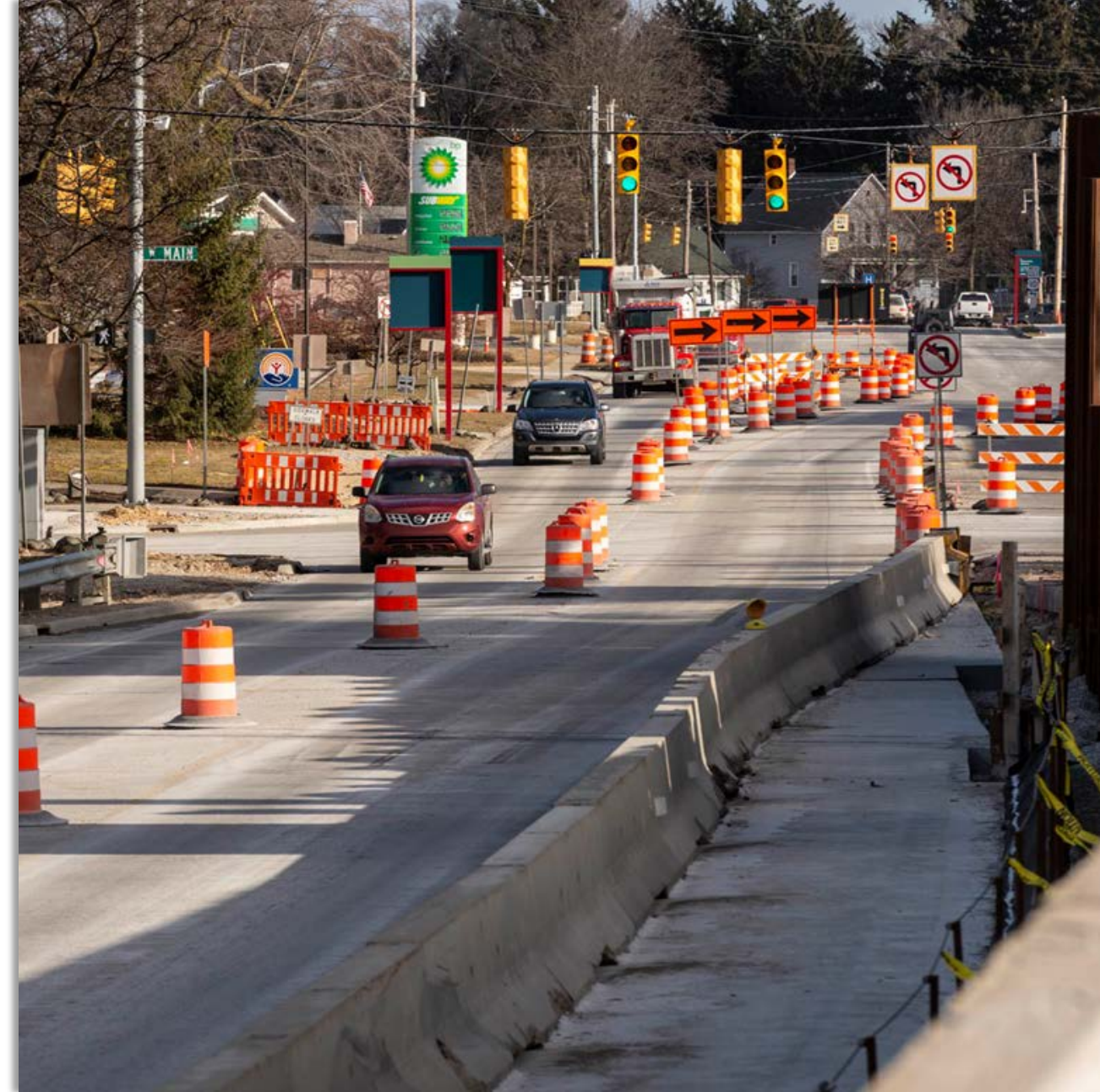
HOLIDAYS PARTICIPATES IN TRAFFIC SAFETY HOLIDAY

RESTRICTIONS CLOSURE HAS DIMENSION RESTRICTIONS (WEIGHT, HEIGHT, ETC.)

NOTES

The Future

- Incorporate boiler plate MOT into TFR. Utilize back office solution to create MOT for inclusion in projects
- Establish process where contractors get lane closure requests approved in the system
- Allow any closure that meets the parameters of the MOT and allow for negotiation within the system
- Construction engineer/contractor responsible for entering daily data into system



MDOT Contacts

Chris Brookes

Work Zone Delivery Engineer

Brookesc@Michigan.gov

517/636-0300

Elise Feldpausch

Connected Vehicle Technical Specialist

feldpausche1@Michigan.gov

517/636-0046

