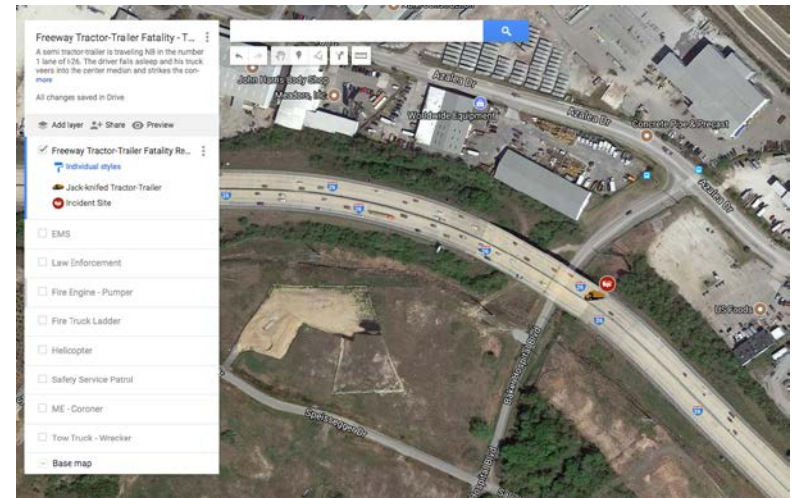


About the TIM ILVT

- Mirrors the instructional content of the 4-hour course for the National TIM Responder Training Program
- Enables participants and instructors to interact in real-time
- Provides ability for question/answer and discussion between instructor and participants
- Allows for the use of virtual tabletop exercises
- Enables responders of various disciplines to work together as a team to learn and practice response techniques



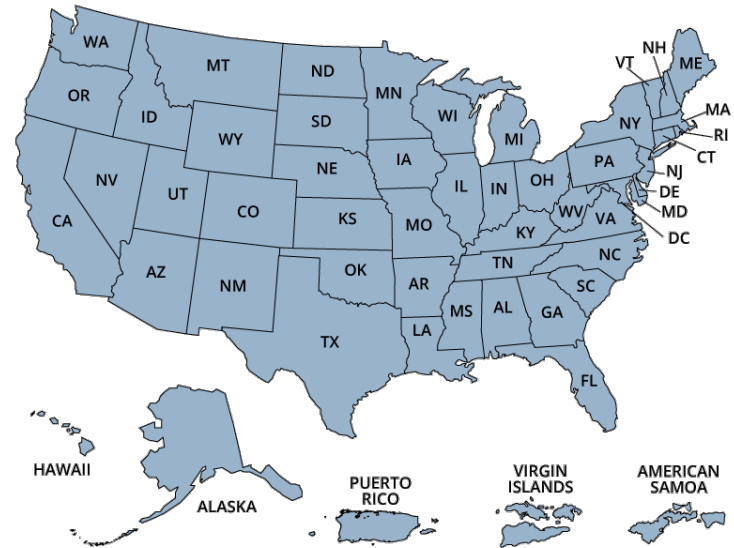
Virtual Tabletop Exercises





Training More Responders

- Provides capability of reaching a much broader audience
- Enables thousands more responders to receive vital training
- Provides responders with more flexibility in taking the training
- Developed in four (4) 1-hour blocks

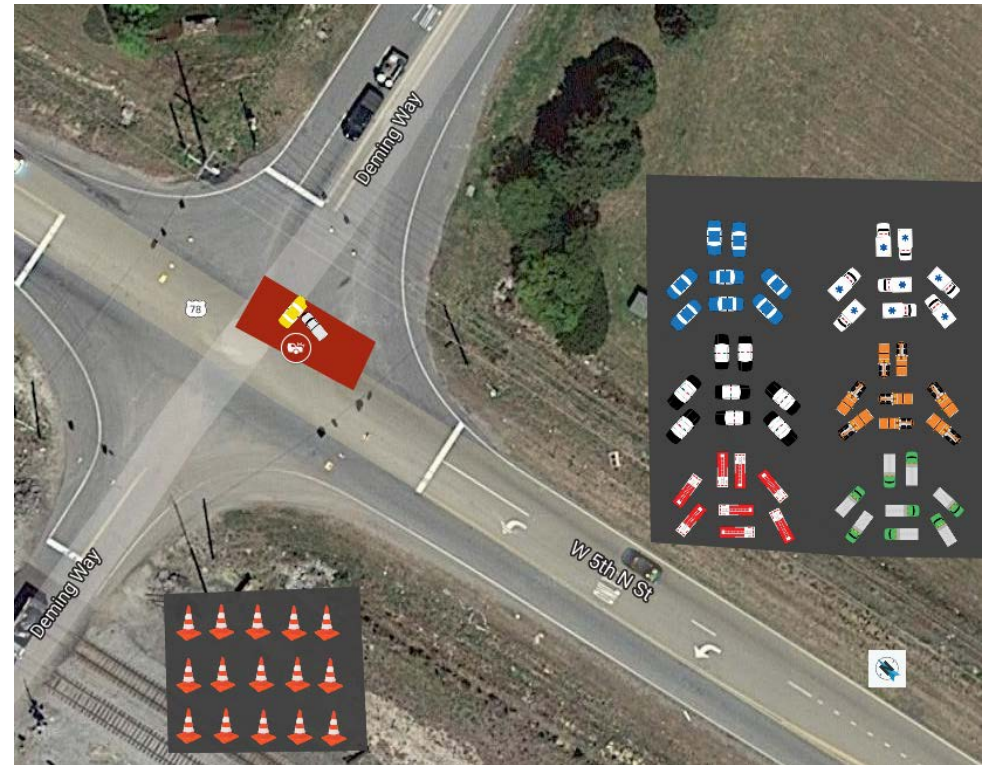




- Block 1** **Lesson 1:** Introduction
- Lesson 2:** TIM Fundamentals and Terminology
-
- Block 2** **Lesson 3:** Notification and Scene Size-up
- Lesson 4:** Safe Vehicle Positioning
- Lesson 5:** Scene Safety
-
- Block 3** **Lesson 6:** Command Responsibilities
- Lesson 7:** Traffic Management
-
- Block 4** **Lesson 8:** Special Circumstances
- Lesson 9:** Clearance and Termination

Interactive Classroom and Exercises

- Online collaborative tool to conduct team exercises
- Uses real-time maps and locations can be customized for different states and locales
- Work as team to practice response procedures for the exercise scenarios
- Browser compatibility is Chrome, Safari, Internet Explorer 11 (IE 8 and Microsoft Edge not compatible)



How to Use Google Maps Exercises

The image shows a Google My Maps interface with an aerial view of a highway interchange. A red overlay box contains three numbered instructions. Red arrows point from the instructions to specific elements in the map interface: from instruction 1 to the 'Incident Site' category in the left sidebar; from instruction 2 to the 'EMS' category in the left sidebar; and from instruction 3 to the 'EMS' vehicle icon in the bottom center of the map. A red box labeled 'Incident scene' points to a red circle on the highway. The left sidebar shows a list of categories including 'Freeway Tractor-Trailer Fatality Re...', 'EMS', 'Law Enforcement', 'Fire Engine - Pumper', 'Fire Truck Ladder', and 'Helicopter'. The 'EMS' category is expanded, showing various vehicle styles like 'EMS 90 Left', 'EMS 90 Right', 'EMS 180 down', etc. The map shows a highway with 'Azalea Dr' and 'Saluda St' labels. A 'Google My Maps' logo is visible at the bottom.

1. Select the category of responder vehicle.
2. Select the angle of placement of the vehicle.
3. Click the vehicle icon and hold the mouse button down to move the vehicle to its placement at the incident scene.

Incident scene

EMS

32.84033, -79.97333

EMS

EMS 90 Left

Google My Maps