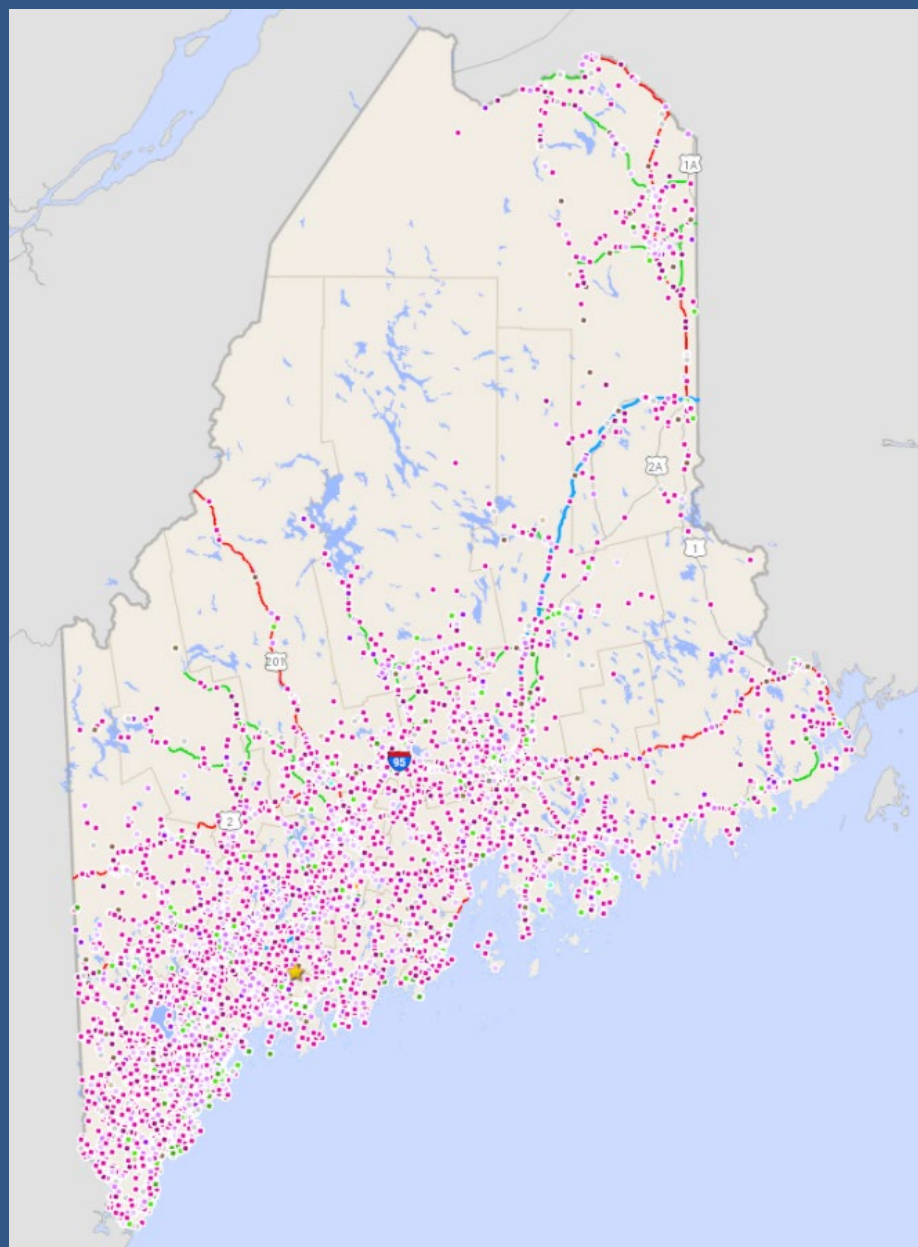
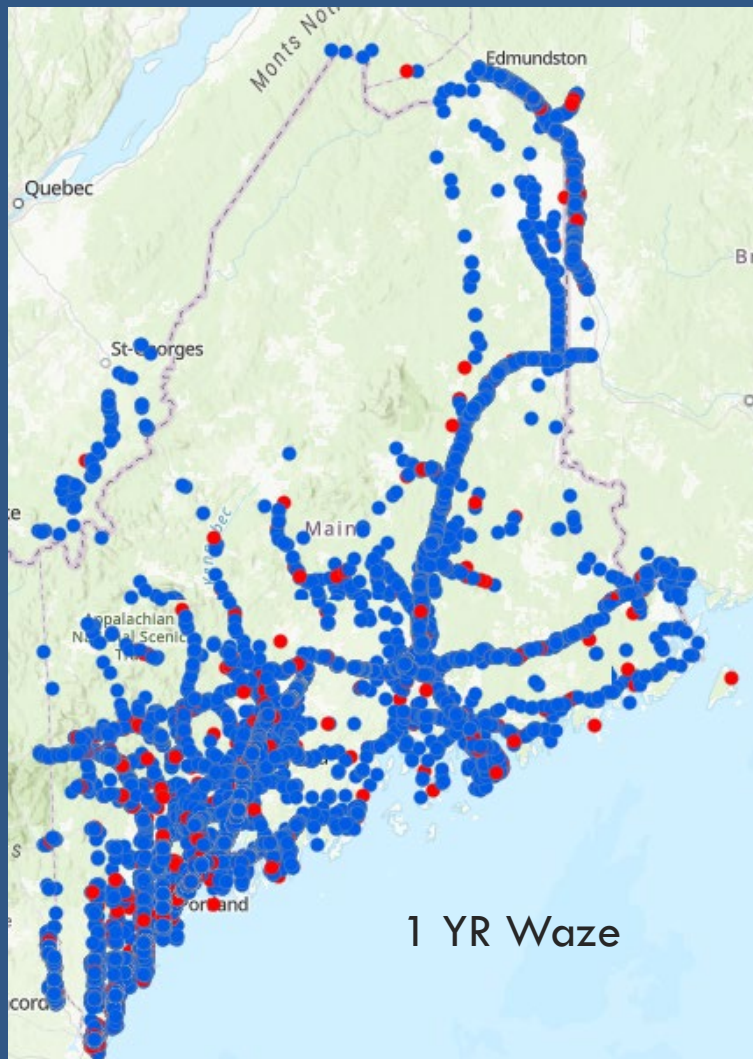




MAINE DOT CROWDSOURCING

Colby Fortier-Brown
Colby.Fortier-brown@maine.gov

CROWDSOURCING TO INCREASE COVERAGE AND REDUCE RESPONSE TIME



**10-year Crash
History**

**With 1+
Serious Injury**

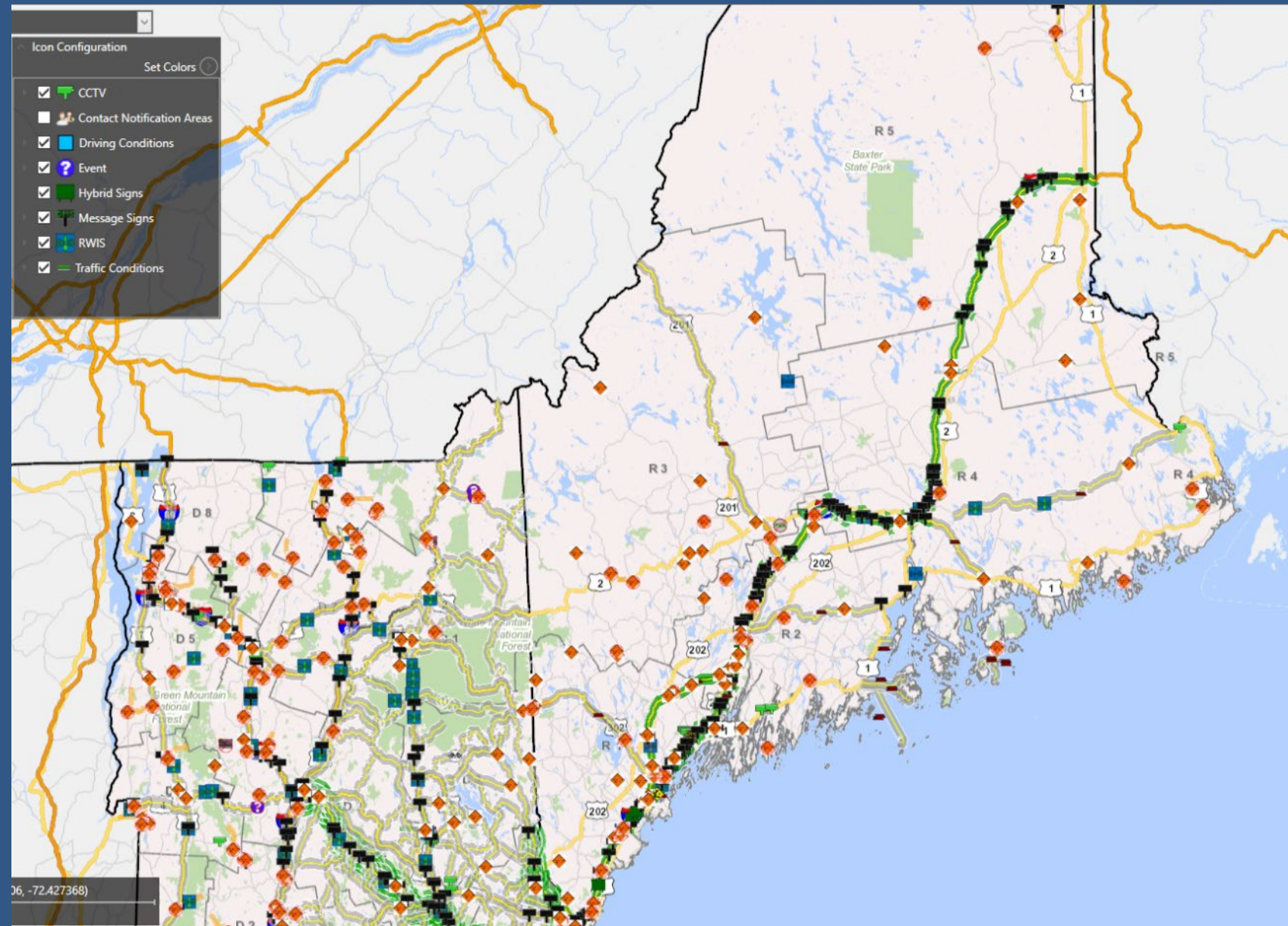
MAINE'S TMC



COMPASS ATMS

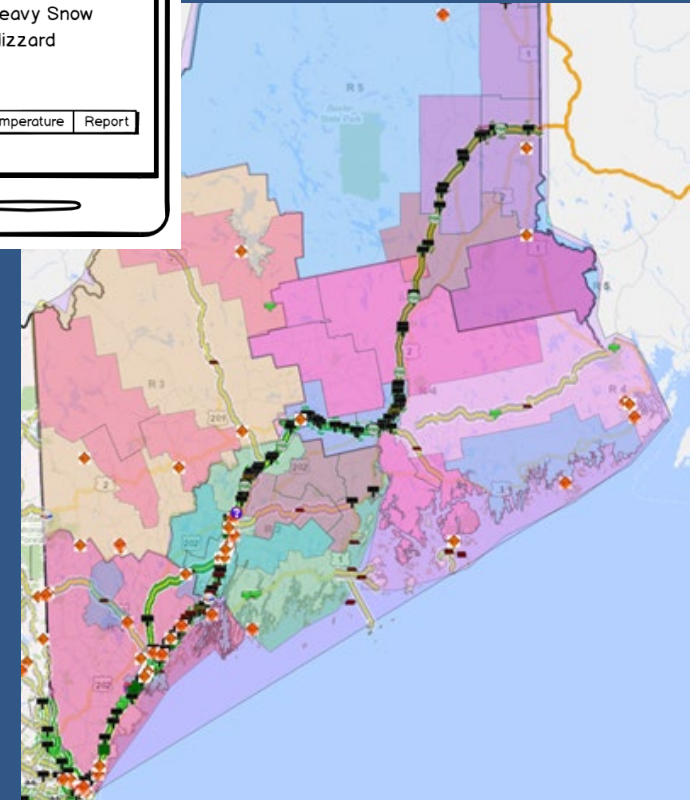
Tri-State ATMS
Provided by Southwest
Research Institute

Used for all TMC
operations



CROWDSOURCING TO IMPROVE EFFICIENCY

- R(oad) W(eather) T(emperature) app developed for Compass.
- Project started in 2018 to help overwhelmed TMC operators.
- The app has been through one winter of field testing and is ready for full deployment.
- In-service / out-of-service app in 2020-2021.



MAINE'S CROWDSOURCING BUSINESS CASE

Benefits



Costs

Hardware Costs

Staff Time - Development, Integration, Maintenance

App Dev ~ \$40K

Earlier Incident Detection

More than Doubled Road Monitoring Geography

Improved Road Weather Data

New Capabilities that Better Serve Travelers

Greater TMC Focus



THANK YOU!

Colby Fortier-Brown
Colby.Fortier-brown@maine.gov